



# ViewPoint<sup>®</sup> Continuous Monitoring System

Sensors, Software and MesaCare<sup>™</sup>

## ViewPoint® Continuous Monitoring System

The ViewPoint® Continuous Monitoring System (CMS), is designed to ensure the safety, quality, and integrity of environmentally sensitive assets, areas, and processes<sup>1,2</sup>. All products in the ViewPoint® family are FCC/IC certified, RoHS compliant, and fully compatible with both **ViewPoint® Pro Enterprise (On-Prem)** and **ViewPoint® Cloud** Continuous Monitoring Software<sup>3</sup>. The apex of the ViewPoint® family, the **VPx Pro 6** CMS, is the most advanced and comprehensive solution, ideal for FDA-regulated facilities that require monitoring of multiple parameters with a single, unified system.

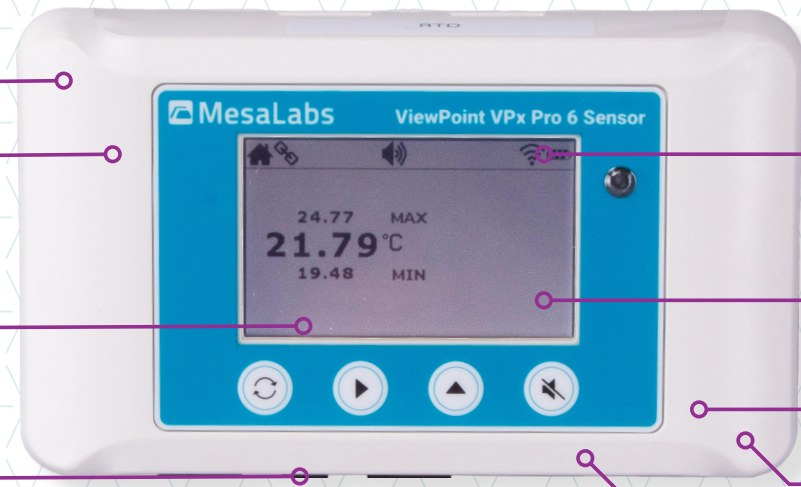
## ViewPoint® VPx Pro 6

**Monitoring Capability** of 12 parameters with one sensor

**Tuned and optimized antenna** maximizes radio range, total radiated power, conducted power, and antenna efficiency<sup>2</sup>

**Interactive LCD screen** and user interface with local audible & visual alerting capability

**Four input ports** allows maximum flexibility with ability to interchange external probes



**Indicators** of battery and network connectivity

**Improved power usage efficiency<sup>2</sup>**

**Sensor diagnostic screen** for troubleshooting and communication status

**On-board memory** of up to 10,000 data points

**Robust fault tolerant file system** and **continuous buffering** of measurement data

**Improved sensor circuit electronics accuracy<sup>2</sup>** for greater overall system accuracy



Scan the QR Code to see the VPx Pro Specifications sheet

<b>Radio Communication:</b>	900 MHz (902-928 MHz) frequency
<b>Application Range</b>	-200 °C to +300 °C
<b>Operating Environment</b>	+15 to +70°C and 0-90% relative humidity (RH) non-condensing
<b>On-board Memory</b>	Local data storage of up to 10,000 logged data points
<b>Display</b>	2.75" B&W LCD Display with User Interface; local audio (beeping) and visual (flashing LED) alerts
<b>Inputs</b>	2 analog inputs, 1 digital input, 1 dry contact/ binary input
<b>Power</b>	3 AA size 3.6V 2.4Ah lithium batteries, or 3 AA size 1.5V alkaline batteries, or 3 A size 3.6V 3.6Ah lithium batteries, or external 5V/1A AC power adapter
<b>Dimensions</b>	5" W x 3.25" H x 1.125" D; 5.625" W x 4.125" H x 1.625" D (with cradle)
<b>Weight</b>	7 oz (with Li-ion batteries); 9 oz (with Li-ion batteries and cradle)

## Tailored ViewPoint® System

With the **ViewPoint® VPx Pro 6, Essentials, or VPx Wi-Fi Sensors**, customers can select the continuous monitoring system that best meets the needs of their facility. The ViewPoint® Essentials System offers enhanced-performance sensors that maintain the same high quality and accuracy found in all ViewPoint® CMS solutions. It is an ideal option for customers who require reliable monitoring of a more focused range of parameters, such as temperature and/or relative humidity.

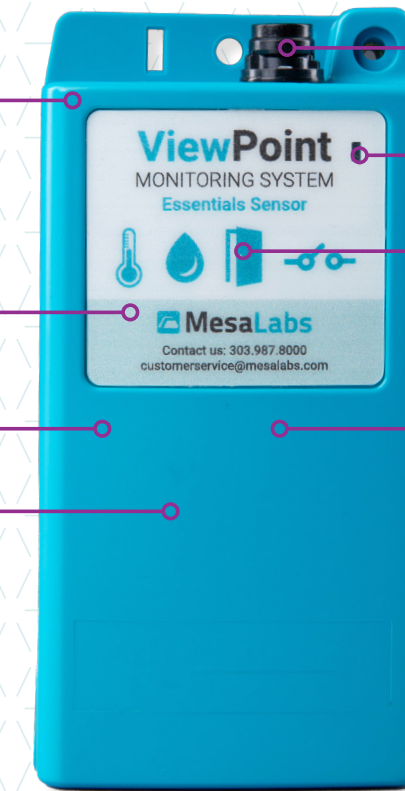
## ViewPoint® Essentials Sensor

**Tuned and optimized antenna** maximizes radio range, total radiated power, conducted power, and antenna efficiency<sup>2</sup>

**On-board memory** of up to 4,000 data points

**Configurable sensor settings** from 1 minute to 12 hours

**Efficient battery life performance<sup>2</sup>** and **user replaceable batteries**



**Snap Hirose connector** means probe replacement is quick and easy

**Sensor LED indicator**

**Multimodal push button** functionality for toggling operation modes and sensor status indications

**Improved sensor circuit electronics** for greater overall system accuracy<sup>2</sup>



Scan this QR Code to see the Essentials Specifications sheet

<b>Radio Communication:</b>	900 MHz (Region 2 ISM Band 902-928 MHz) frequency hopping radio
<b>Application Range:</b>	-90°C to 60°C
<b>Operating Environment:</b>	+15°C to +40°C and 0 to 90% relative humidity (RH) non-condensing
<b>On-board Memory:</b>	Local data storage of up to 4,000 logged packets
<b>Inputs:</b>	1 analog input, 1 digital input, 1 discrete/ binary input
<b>Power:</b>	2 AA size 1.5V alkaline batteries
<b>Dimensions:</b>	2.15" W x 4.25" H x 1.125" D
<b>Weight:</b>	4.1 oz (with batteries)



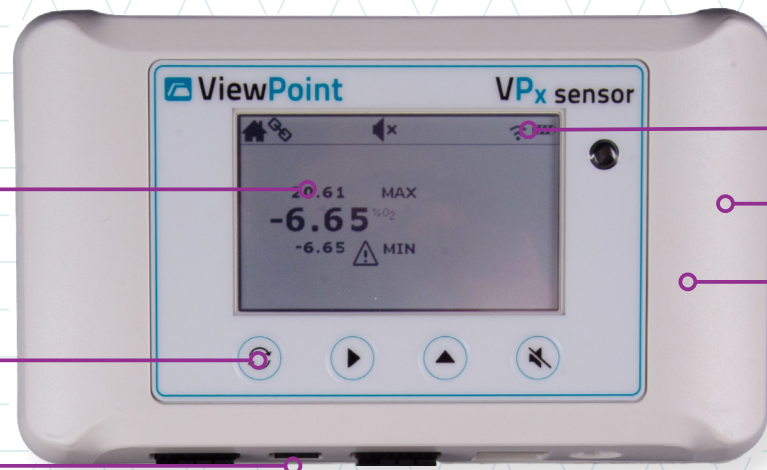
### CDC Vaccines for Children (VFC) Program Compliance

With usage of VPx Pro 6 sensors, you can rest assured these will meet and exceed CDC Vaccines for Children program guidelines<sup>4</sup>.

## 900 MHz or Wi-Fi

For customers looking to leverage their existing Wi-Fi network with a simplified setup and configuration process, the **ViewPoint® VPx Wi-Fi System** offers an ideal solution. It combines ease of use with the flexibility to monitor a wide range of parameters. With multiple input types configurable to meet your specific needs, the ViewPoint® VPx Wi-Fi system ensures comprehensive monitoring without the complexity.

## ViewPoint® VPx Wi-Fi Sensor



**LCD screen** displays current readings and cumulative min/max since last reset, with local audible and visual alert capability

**Touch-button user interface** allows access to on-board diagnostics

**Four input ports** allows maximum flexibility with ability to interchange external probes

**Indicators** of battery and network connectivity

**Monitoring Capability** of 12 parameters with one sensor

**On-board memory** of at least 4,000 data points



Scan this QR Code to see the ViewPoint® Wi-Fi Specifications sheet

<b>Radio Communication</b>	Wi-Fi 2.4 GHz (802.11 b/g) radio transmission; Wi-Fi Alliance certified for WPA2-PSK; Wireless data transmission via Region 2 ISM band (902-928 MHz)
<b>Application Range</b>	-200 °C to +300 °C
<b>Operating Environment</b>	0°C to +70°C and ≤95% relative humidity (RH) non-condensing
<b>Display</b>	2.75" B&W LCD Display with User Interface; local audio and visual (LED) alerts
<b>Inputs</b>	2 analog inputs, 1 digital input, 1 doorway switch/ motion/ alarm contact input
<b>On-board memory</b>	Local data storage of at least 4,000 logged data points
<b>Power</b>	5V DC line and/or two (2) AA 3.6V lithium-ion batteries as back-up in case of power outages.
<b>Dimensions</b>	5" W x 3.25" H x 1.125" D; 5.625" W x 4.125" H x 1.625" D (with cradle)
<b>Weight</b>	7 oz; 9 oz (with cradle)

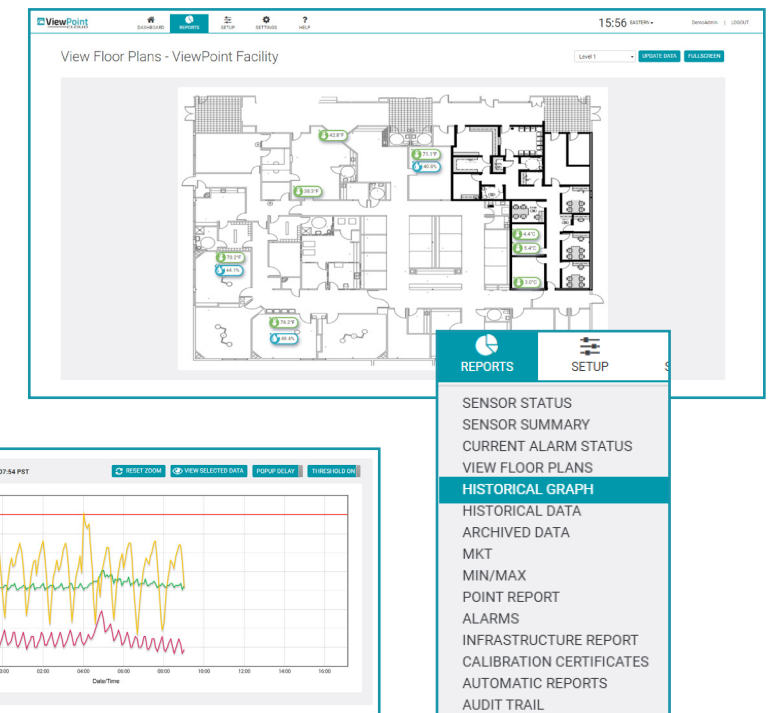
## ViewPoint® Continuous Monitoring Software

As the ViewPoint® Continuous Monitoring System (CMS) safeguards your critical assets, the **ViewPoint® Cloud Continuous Monitoring Software** and **ViewPoint® Pro Enterprise (On-Prem) Software** simplify every aspect of monitoring. From data storage and analysis to receiving notifications, alerts, and generating reports, ViewPoint® software ensures a seamless experience. Serving as the key to **maximizing security, regulatory compliance, and product integrity**, ViewPoint® software is the essential component that elevates your continuous monitoring system to its full potential<sup>1</sup>. ViewPoint® software applications are **USFDA 21 CFR Part 11 compliant**, providing defensible audit trail and reports to maintain healthcare accreditation and **adherence to GxP guidelines**<sup>5,6</sup>.

### ViewPoint® Cloud

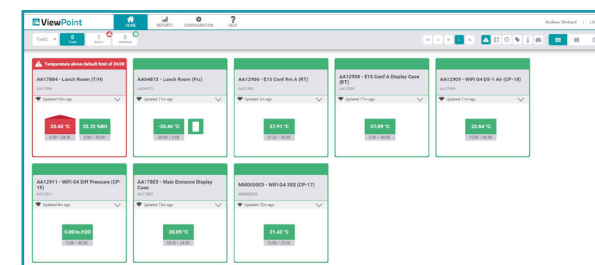
ViewPoint® Cloud (VPC) is an intuitive, validated and configurable cloud-based software system connecting all environmental monitors and sensors. ViewPoint® Cloud Continuous Monitoring Software is the ultimate, flexible software allowing users gap-free monitoring of multiple, critical assets in real-time providing access from any computer, smart-phone or tablet.

- + **Scalable:** Manage thousands of sensors in single, convenient web application.
- + **Secure:** Fully cloud-managed, backed-up, with encrypted data transport.
- + **Real-time data collection:** Preserves product integrity and controlled environmental conditions.
- + **Automated Monitoring and Reporting:** Reduces risk, increase efficiency, and minimize human error<sup>7</sup>.
- + **Cutting-Edge, Customizable Data Visualizations and Reporting**



### ViewPoint® Pro Enterprise (On-Prem)

ViewPoint® On-Prem software runs on your network infrastructure, whether that's on a server or on a virtual machine.



- + **Portal access via a web-browser:** View data, configure system settings, while user is on their network.
- + **Full control of access, roles and permissions:** Your System Admins can configure user access, authentication and allowable permissions, views and ability to make changes.
- + **Immutable Audit Trail:** Faithfully captures and records each time-stamped event and action, user activity, corrective actions, system changes and more, for regulatory compliance.
- + **Scalable Enterprise Level Monitoring System:** Easily configure your system for alerts and alarms for any parameter.
- + **Valuable Asset Status Tracking:** Intuitive platform to allow for easy importing of floor plan maps and overlaying assets being monitored.



## MesaCare™

You rely on your Continuous Monitoring System (CMS) to maintain regulatory compliance by safeguarding critical assets, products, areas and processes. Mesa Labs Service and Support teams have the in-depth knowledge and expertise to aid in maximizing the uptime, longevity and operational performance of your system. From the design, installation and configuration of your bespoke system to calibration, expert technical support and MesaCare™ Service Agreements, Mesa Labs provides a complete suite of services for end-to-end care across the full lifecycle of your Continuous Monitoring System.

- + Consultation and Customer Design
  - + Calibrations
  - + Installation and Configuration
- + Technical Support and Training
  - + System Validation and Qualification
  - + Temperature Mapping Services

	MesaCare Lite Cloud	MesaCare Lite On-Prem	MesaCare Complete Cloud	MesaCare Complete On-Prem
ViewPoint® Cloud Software License & Software Upgrades	●	○	●	○
ViewPoint® Pro On-Prem Software License & Software Upgrades	○	●	○	●
24/7 Technical Support & User Training	●	●	●	●
Annual Onsite NIST 1-Point OVIC (Calibrations)	○	○	●	●
Hardware Firmware Updates	○	○	●	●
Annual Sensor Battery Replacements	○	○	●	●
Qualification Validation Protocols	○	○	●	●

● Feature Available    ○ Feature Unavailable

## Built for today. Safeguarding tomorrow.

At Mesa Labs, our commitment to being a purpose-driven business guides our journey towards an impactful future. We play a critical role in a GxP company's risk and quality management system. Mesa Labs provide a full white glove service offering from consultation & system design, installation & system validation, programming & training, 24/7 technical support, calibrations, and preventative maintenance to help ensure staying compliant remains simple.

To learn more, visit us online  
by scanning:



### References

- <sup>1</sup> ISPE Baseline® Guide: Sterile Product Manufacturing Facilities (Third Edition)
- <sup>2</sup> Internal Mesa Laboratories V&V Data
- <sup>3</sup> ViewPoint® FCC certification; ViewPoint® RoHS compliance certification
- <sup>4</sup> CDC Vaccine Storage and Handling Toolkit, March 2024 ([www.cdc.gov/vaccines/hcp/admin/storage/toolkit/storage-handling-toolkit.pdf](http://www.cdc.gov/vaccines/hcp/admin/storage/toolkit/storage-handling-toolkit.pdf))
- <sup>5</sup> ASHRAE 170-2017
- <sup>6</sup> US FDA cGMP for Finished Pharmaceuticals (21 CFR parts 210 and 211)
- <sup>7</sup> EU GMP Annex 1; FDA Guidance for Industry: Sterile Drug Products Produced by Aseptic Processing — Current Good Manufacturing Practice



 **MesaLabs**

12100 W. 6th Avenue

Lakewood, CO 80228

[mesalabs.com/continuous-process-monitoring](https://mesalabs.com/continuous-process-monitoring)

[cmsales@mesalabs.com](mailto:cmsales@mesalabs.com)

**1.303.987.8000**